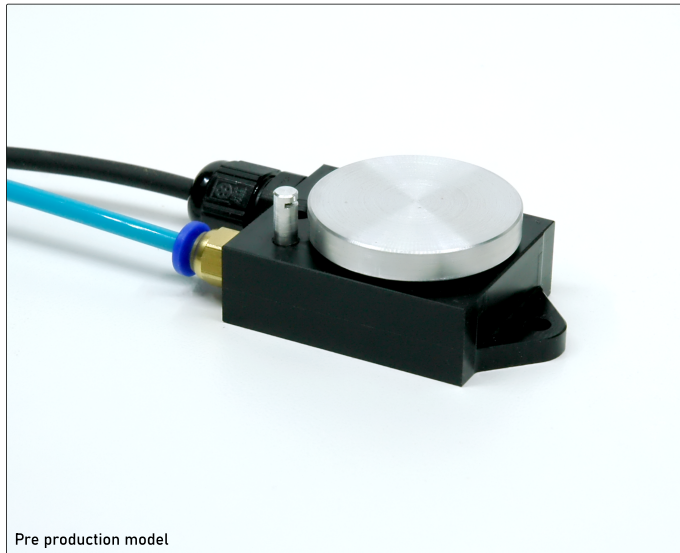


Touch Probe / Tool breakage sensor V2 Specifications



The touch probe can be used to measure tool length, the top of a workpiece or as a tool breakage sensor, for detecting tool length differences between operations.



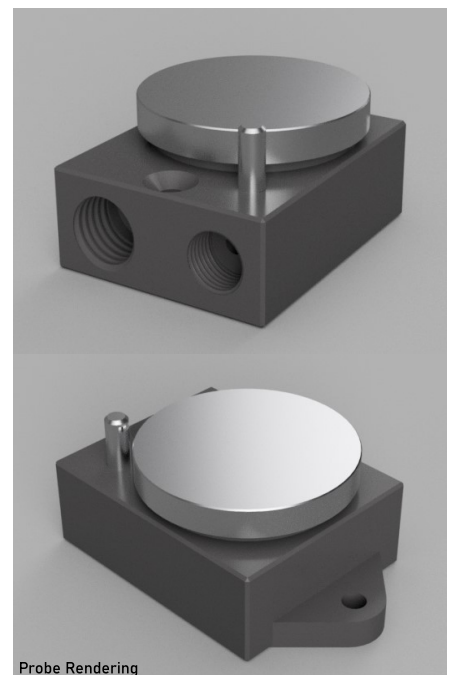
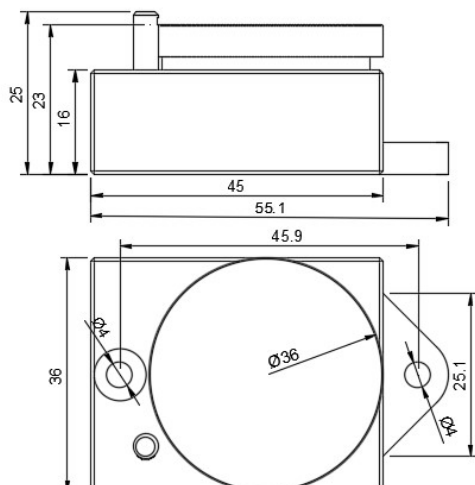
Probe Features:

- Cost effective simple design
- Excellent repeatability
- Small space saving design
- All parts are made from coolant resistant materials
- Touch Plate is hard anodized Aluminum
- Air blast facility, to clear cutting chips and coolant of the plate
- Simple mechanism
- No electronics to go faulty

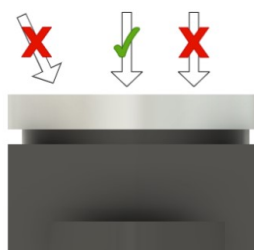
Probe specifications

Switch Mode	Dry Contact
Output	Normally closed
Contact Lifetime	500000 contacts
Cable	3 Meter Chemical resistant Cable
Recommended operating speed	20 to 50 mm/min
Contact Force	1N

Probe Dimentions



Correct Probe Usage



Probe Repeatability tests

Z0.000826
Z0.000912
Z0.000000
Z0.001043
Z0.001862
Z0.001751
Z0.001055
Z0.002327
Z0.001457
Z0.001661

Done at 20mm/min